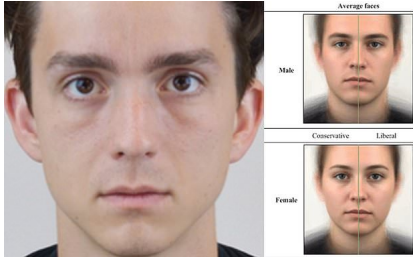


Google And Facebook Decide If You Are A Liberal or A Republican or a Crook From A Single Picture Of Your Face

Tue, 23 Apr 2024 15:35:40, admin45789, [post_tag: google-and-facebook-decide-if-you-are-a-liberal-or-a-republican-or-a-crook-from-a-single-picture-of-your-face, category: news]

Can YOU spot the right-winger and the liberal? AI predicts people's politics by analyzing a single selfie



Facial recognition technology can be used to reveal people's personal information, a new study revealed. Researchers said the AI tool could identify liberals versus conservatives based on their pictures. They are now urging lawmakers to take steps to protect people's security from facial recognition.

- Facial recognition tools can identify conservatives versus liberals
- Conservatives tended to have larger lower faces while liberals were smaller
- READ MORE: [TSA is quietly rolling out facial recognition tech to airports](#)

By [Nikki Main](#)

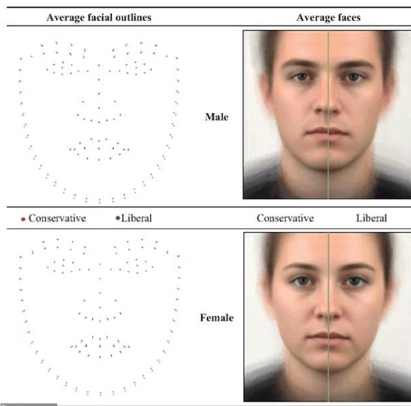
The 'pink-haired liberal' has become something of a stereotype, but AI can now predict someone's politics based solely on their looks.

A new program can spot tiny nuances in people's facial features that correlate to their political leaning - with over 70 percent accuracy.

It was trained on hundreds of photos and voting habits of Americans.

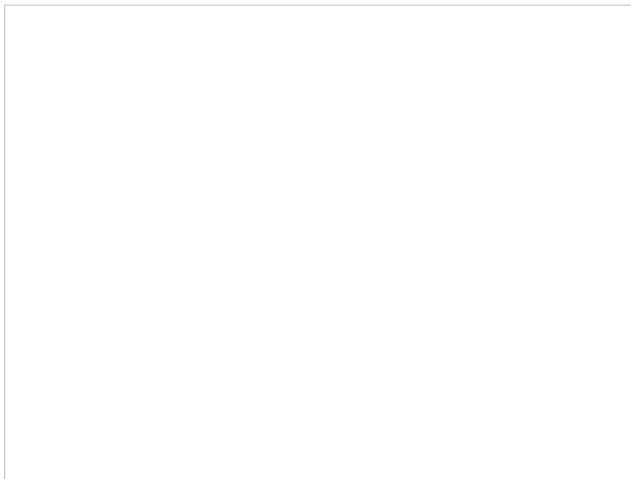
The results found that liberals tended to have smaller lower faces, their chins were smaller and their lips and noses pointed downward, while conservatives have larger, wider features in the lower halves of their faces.

Dr. Michal Kosinski, the study's lead author, warned that facial recognition tools are dangerous if they fall into the wrong hands because millions of people's information could be accessed without their consent.



Researchers used facial recognition software to identify a person's political affiliation based on their characteristics. It found that conservatives tended to have wider lower faces while liberals had smaller lower faces and downturned lips and nose

Former President Donald Trump - conservative (left) and President Joe Biden - liberal (right). Trump has a wider jaw line than Biden whose lower face is more narrow with the telltale slightly downturned lips that would label him as a liberal



American conservative political commentator Candace Owens (left) and liberal television host Oprah Winfrey (right). Owens lower face is slightly wider than Winfrey's which is smaller and comes to a more pointed angle

Kosinski and his team looked at expressionless facial images of 591 participants and natural images of 3,400 politicians from the US, UK and [Canada](#) and found a predictive model could accurately discern the [person's political orientation](#).

The study gives more insight into how facial recognition can be used to discern someone's private information from a [Facebook](#) photo - even if they haven't posted their views online.

'Our findings underscore the urgency for scholars, the public, and policymakers to recognize and address the potential risks of facial recognition technology to personal privacy,' the study warned.

'Even more worrisome, these algorithms can identify personal attributes that were, thus far, widely considered to be unrecognizable from faces,' it added.

Kosinski told [Fox News](#) Digital that 'algorithms can be very easily applied to millions of people very quickly and cheaply' and that the study is 'more of a warning tale' about the technology 'that is in your phone and is very widely used everywhere.'

The [study](#) had participants fill out a political orientation questionnaire which asked whether they tend to vote for more liberal or conservative political candidates and if they consider them to have one political affiliation over another.

They were also asked to rank the extent at which they consider themselves to be liberal or conservative.

Roseanne Barr (left) is a staunch supporter of Donald Trump and spoke out at a conservative event in December. Taylor Swift - democrat (right) endorsed Joe Biden during the last presidential election. Barr's wider smile goes straight across indicating she is a conservative while Swift has smaller lower facial features and angled lips

Kid Rock (left) is a self-proclaimed conservative who has come under fire for encouraging other conservatives to boycott Bud Light after it partnered with transgender influencer Dylan Mulvaney. Lin-Manuel Miranda - democrat (right) endorsed Joe Biden in the last presidential election. Kid Rock's wider-set face would identify him as a conservative versus Miranda's smaller features

After completing the 100-item questionnaire, the participants were photographed wearing a black T-shirt, removed all jewelry, shaved their facial hair or removed makeup (if necessary) and pulled back their hair so the software could only focus on their face.

READ MORE: [Conservative women are MORE attractive than liberals but left-wing men have a better poker face, according to study using AI](#)



While the AI determined that women with more attractive facial features were more likely to be politically conservative, it found no connection of the sort while analyzing its pool of male politician's photos. For both men and women, the AI was correct 61 percent of the time

The VGGFace2 - an AI facial recognition software created in 2017 - was used to examine the images and determined the participant's facial characteristics by cross-referencing them with other images stored in a database.

Aside from the projected outlines of [conservative versus liberal faces](#), the study found that all other 'outlines and faces are virtually identical, revealing no other obvious differences between liberals and conservatives, including in facial expression, grooming, skin color, or head orientation.'

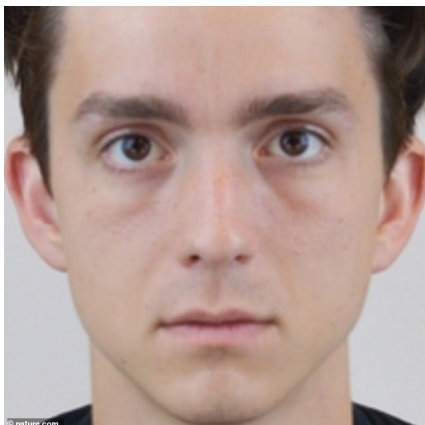
The findings took into account other factors like the participants' age, gender and ethnicity, but researchers found the connection between the person's political leanings was solely based on their facial characteristics.

This follows a separate study Kosinski conducted in 2021 that found the VGGFace2 software could identify a person as liberal or conservative with 70 percent accuracy.

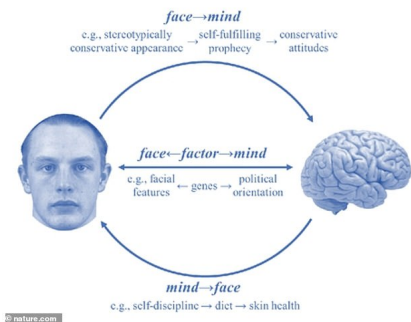
At the time, he was unable to determine exactly what characteristics were associated with the person's political affiliation, but found trends like when a person looked directly at the camera they were labeled as liberal while those showing disgust were determined to be conservative.

[Democratic President Joe Biden](#) and [former republican President Donald Trump](#) appear to fit the identifying characteristics alongside conservative celebrities like [Kid Rock](#) and [Roseanne Barr](#) versus liberal celebrities like Lin-Manuel Miranda and [Taylor Swift](#).

The celebrities' facial features fit the characteristics because of conservatives larger lower faces while liberals is much smaller by comparison and are more likely to have the downturned lips and noses.



The researchers used a standardized facial image (pictured) in the study to represent the face of a person identified as a conservativeDailyMail.com has reached out to Dr. Michal Kosinski for comment.



The study focused on 590 participants who filled out a 100-item questionnaire about their political affiliation and other information about age, gender and ethnicity. The researchers found that the facial features played a primary role in identifying their political orientation

[SPACEX EMPLOYEES GETTING WOUNDED AT INCREDIBLE RATES...](#)

[datagen.tech](#) » [guides](#) » [face-recognition](#) » [face-analysis](#)

[Face Analysis in Computer Vision: A Practical Guide - Datagen](#)

Face analysis and face recognition are two activities that usually occur after face detection. Face detection is a computer vision task in which an algorithm attempts to identify faces in an image. Face detection algorithms provide the bounding boxes of the faces they manage to detect. When a face is detected, a computer vision system might ...



[imagerecognize.com](#) » [object](#) » [crook](#)

[Recognize and identify crook in your image online - ImageRecognize.com](#)

Identify and recognize crook in your image or picture. Our image recognition tool uses AI and machine learning, and will also identify other objects besides crook found in your image. ... These algorithms make computers capable of recognizing different elements in an image. ... For example, you are standing at a store, and some product catches ...

[usatoday.com](#) » ... » 2022.104 » 28 » [how-check-if-someone-spying-your-pc-mac](#) : 7425278001

[How to check if someone is spying on your computer \(PC or Mac\) - USA TODAY](#)

PC users: Follow these steps. • Open the Task Manager by hitting Ctrl + Shift + Esc. Under the Processes tab, you'll see the apps and background processes running on your PC. Look through the ...

Images computers can tell if you are a crook from your picture

[stylesense.io](#) » [face_analyzer](#)

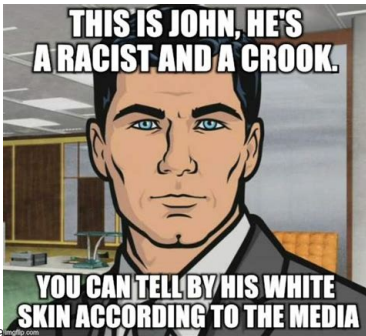
[AI Face Shape Analyzer | StyleSense.io](#)

Eye Shape Analyzer. Simply take or upload a selfie to identify your face shape, and prominent facial features. Then, use our makeup contour guides tailored to your facial

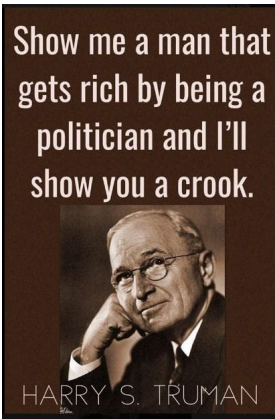
[YouTuber who paid a private investigator to follow him for a month reveals the staggering level of personal information he unearthed](#)



YouTube prankster Max Fosh, 28, from London, who boasts more than 3 million subscribers on YouTube, was shocked by the level of detail the investigator managed to uncover .

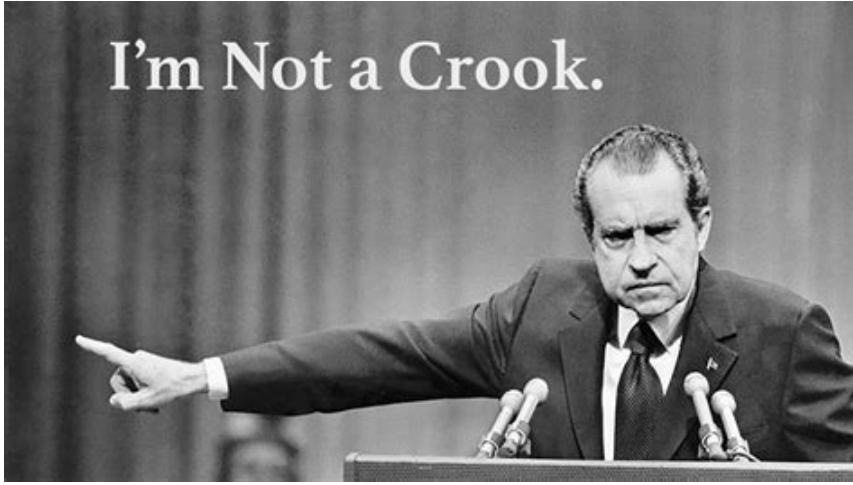


546 x 495



[Sorkin Blames Zuckerberg for Jan 6; Writing Movie About It...](#)

I'm Not a Crook.



JOE BIDEN SHOULD BE
INSPECTED FOR A HIDDEN
EAR PIECE AS WELL AS
SUBMIT TO A DRUG TEST
BEFORE THE DEBATE



SAY YES IF YOU AGREE

Frank Perdue Quote: "I can't tell by looking in your eyes whether you ..."



Frank Perdue Quote: "I can't tell by looking in your eyes whether you ..."

Show all

See more images of computers can tell if you are a crook from your picture.

[usatoday.com › story › tech › columnist › 2020 › 08 › 24 › computer-privacy-how-tell-if...](#)

[How to tell if someone is snooping on your computer or tablet - USA TODAY](#)

On a Mac: To see recent items, click on the Apple logo on the left-hand side of the menu bar. Hover **you** mouse over Recent Items. **You**ll see the 10 most recent items accessed in three categories ...

[cnn.com › 2021 › 02 › 04 › tech › face-recognition-ai-tool](#)

[This new tool can tell you if your online photos are helping ... - CNN](#)

When **you** post photos of **yourself** or friends and family online, **you** may not imagine they could be used to develop facial-recognition systems that **can** identify individuals offline. A new site hopes ...

[dailymail.co.uk › sciencetech › article-2071185 › Now-computers-work-yours...](#)

[Now computers can work out who you're related to... just from a photo...](#)

Researchers **from** Nanyang University in Singapore 'trained' **software** to work out if two people **are** related - and it could be godsend for families searching for missing relatives.